



CONCRETE PUMP



Henan shengmao machinery co., ltd

Factory Address: Xida Village, Wangcun Town, Xingyang, Zhengzhou City, Henan Province, China

Office Address: Room 701, building 7 (tower B), Central China E-commerce harbour,
No. 99 of southern Daxue road, Erqi district, Zhengzhou city, Henan province.

Tel: +86 371 8653 3192 whatsapp/微信: +86 18703719962
Web: shengmaomachine.com Email: sales@shengmaomachine.com



CORPORATE PHILOSOPHY



Customer First
Quality First
Create bright future for
human beings by
innovation and service.

Company introduction

Since its foundation in 2001, Henan shengmao machinery Co., Ltd. has developed into one of the leading construction machinery suppliers in China. We have made a mark in China market as a reliable and long-term supplier of construction machinery to over 1000 clients from all over the world.

Our factory is located in Zhengzhou city which is known as the "home to construction machinery" in China. In Zhengzhou city, there are hundreds of manufacturers of construction machinery parts supplier, we can find all the parts we need to produce construction machinery within half an hour's drive. Further more, we have enough skillful welding and painting workers here due to over 50-year history of construction machine industry in this city. Thanks to the above two main reasons, we can supply to our clients with high quality construction machinery with competitive prices.

In today's fast paced world, many leading companies are looking for more than just a construction machinery supplier. They want a supply partner to understand their requirements, vision, goals and business strategies. A supply partner that can offer a range of solutions to meet the needs of whatever special requirements of their projects have. A supply partner who listens, understands and acts on what is required by providing innovative solutions. Henan shengmao machinery Co., Ltd. already makes this difference to all its clients by being a long-term and reliable construction machinery supplier. Contact us today to see how we can make the difference for you.



HBTS ▶



HBT series concrete pump is applicable on fine stone concrete conveying, floor heating construction, tunnel and underground construction, mortar conveying, used as spray pump when installed with incidental spraying equipment, for concrete, mortar, refractory material and green soil spraying, applied for high-rise conveying, railway, tunnel, bridge construction and special applications, hydraulic power, mining and national defense.

THE MAIN FEATURES ARE AS FOLLOWS:

1. Reliable performance: adopt Italy hydraulic drive, which reduce reversing impact. S Valves system is easy for maintaining.
2. Complete machine can be taken apart into two, easy to transport and install in mining construction location.
3. Core parts are Japanese Kawasaki original, equipment lifetime and quality is reliable
4. Intelligent power control system to regulate the engine speed automatically, for smooth and efficient operation
5. Plunger pump with constant power, to ensure the efficiency of main engineHigh-quality wear resistant alloy components for long service-life, Air cooling system, without dependence of external water
6. PLC system to ensure best control performance, Equipped with wired remote controller, easy to operate.



■ BS25



Items		Units	Parameters
			BS25-08-56R
Whole performance of machine	Max. theo. concrete output (L./H.)	m3/h	25
	Max.concrete pumping pressure (H. /L.)	Mpa	8
	Distribution valve type		S Valve
	Concrete cylinder diameterxstroke	mm	Φ140×845
	Hopper capacityxfeeding height	M3/mm	0.4/1100
	Outlet diameter	mm	Φ100
Power system	Diesel engine model		Weifang Deller 4100
	Electrical engineering power	kW	56
	Rotate speed	r/min	2000
Hydraulic system	Circuit type		Open circuit
	Pumping system pressure	Mpa	18
	Mixing system pressure	Mpa	6-8
	Capacity of oil tank	L	260
Max. Theoretical Vertical/ Horizontal Conveying Distance		m	120/300
Other parameters	Max. aggregate diameter	mm	10/20
	Inside diameter of delivering pipe	mm	Φ80
	Dimensions: length*width*height	mm	4500×1750×1600
	Total weight	kg	3000



Items		Units	Parameters
			BS25-10-37
Whole performance of machine	Max. theo. concrete output (L./H.)	m3/h	25
	Max.concrete pumping pressure (H. /L.)	Mpa	10
	Distribution valve type		S Valve
	Concrete cylinder diameterxstroke	mm	Φ140×845
	Hopper capacityxfeeding height	Lxmm	400×1100
	Outlet diameter	mm	Φ100
Power system	Diesel engine model		Y225M-3
	Electrical engineering power	kW	37
	Rotate speed	r/min	1480
Hydraulic system	Circuit type		Open circuit
	Pumping system pressure	Mpa	18
	Mixing system pressure	Mpa	6-8
	Capacity of oil tank	L	260
Max. Theoretical Vertical/ Horizontal Conveying Distance		m	100/400
Other parameters	Max. aggregate diameter	mm	Slick /scre: 20/10
	Inside diameter of delivering pipe	mm	Φ80
	Dimensions: length*width*height	mm	3400×1420×1600
	Total weight	kg	2300

BS30



Items		Units	Parameters
			BS30-10-56R
Whole performance of machine	Max. theo. concrete output (L./H.)	m3/h	30
	Max.concrete pumping pressure (H. /L.)	Mpa	10
	Distribution valve type		S Valve
	Concrete cylinder diameter*stroke	mm	Φ140×1200
	Hopper capacity*feeding height	M3/mm	0.4/1100
Power system	Outlet diameter	mm	Φ100
	Diesel engine model		Weifang Delier 4100
	Electrical engineering power	kW	56
	Rotate speed	r/min	1480
Hydraulic system	Circuit type		Open circuit
	Pumping system pressure	Mpa	31.5
	Mixing system pressure	Mpa	6-8
	Capacity of oil tank	L	200
Max. Theoretical Vertical/ Horizontal Conveying Distance		m	300/90
Other parameters	Max. aggregate diameter	mm	20/30
	Inside diameter of delivering pipe	mm	Φ100
	Dimensions: length*width*height	mm	3800×1250×1450
	Total weight	kg	3000



Items		Units	Parameters
			BS30-10-37
Whole performance of machine	Max. theo. concrete output (L./H.)	m3/h	30
	Max.concrete pumping pressure (H. /L.)	Mpa	10
	Distribution valve type		S Valve
	Concrete cylinder diameter*stroke	mm	Φ140×845
	Hopper capacity*feeding height	Lxmm	400×1100
Power system	Outlet diameter	mm	Φ100
	Diesel engine model		QABP200L4A30B35
	Electrical engineering power	kW	37
	Rotate speed	r/min	1480
Hydraulic system	Circuit type		Open circuit
	Pumping system pressure	Mpa	18
	Mixing system pressure	Mpa	6-8
	Capacity of oil tank	L	260
Max. Theoretical Vertical/ Horizontal Conveying Distance		m	100/400
Other parameters	Max. aggregate diameter	mm	Slick /scree: 10/20
	Inside diameter of delivering pipe	mm	Φ80
	Dimensions: length*width*height	mm	3400X1420×1600
	Total weight	kg	2300

HBTS40



Items		Units	Parameters
			HBTSB40-10-66R
Whole performance of machine	Max. theo. concrete output (L./H.)	m3/h	40/30
	Max.concrete pumping pressure (H. /L.)	Mpa	12/7.6
	Distribution valve type		S Valve
	Concrete cylinder diameter*stroke	mm	Φ1800×1200
	Hopper capacity*feeding height	M3/mm	400×1100
	Outlet diameter	mm	Φ150
Power system	Diesel engine model		Wefang Delier 6105ZB
	Electrical engineering power	kW	66
	Rotate speed	r/min	2100
Hydraulic system	Circuit type		Open circuit
	Pumping system pressure	Mpa	31.5
	Mixing system pressure	Mpa	6-8
	Capacity of oil tank	L	370
Max. Theoretical Vertical/ Horizontal Conveying Distance		m	180/600
Other parameters	Max. aggregate diameter	mm	Scree:40/50
	Inside diameter of delivering pipe	mm	Φ125
	Dimensions: length*width*height	mm	5000×1850×1700
	Total weight	kg	4500



Items		Units	Parameters
			HBT40-13-45
Whole performance of machine	Max. theo. concrete output (L./H.)	m3/h	40
	Max.concrete pumping pressure (H. /L.)	Mpa	13
	Distribution valve type		S Valve
	Concrete cylinder diameterxstroke	mm	Φ160×1100
	Hopper capacityxfeeding height	Lxmm	0.4/1100
	Outlet diameter	mm	Φ125
Hydraulic system	Electrical engineering power	kW	45
	Rotate speed	r/min	1480
	Circuit type		Open circuit
	Pumping system pressure	Mpa	28
Other parameters	Mixing system pressure	Mpa	8
	Capacity of oil tank	L	370
	Max. Theoretical Vertical/ Horizontal Conveying Distance	m	160/600
	Max. aggregate diameter	mm	20/30
Other parameters	Inside diameter of delivering pipe	mm	Φ80-125
	Dimensions: length*width*height	mm	4500×1750×1600
	Total weight	kg	3200

HBTS60



Items		Units	Parameters
			HBTS60-12-82R
Whole performance of machine	Max. theo. concrete output (L./H.)	m3/h	60/36
	Max.concrete pumping pressure (H. /L.)	Mpa	11.7/7
	Distribution valve type		S Valve
	Concrete cylinder diameter*stroke	mm	Φ180×1300
	Hopper capacity*feeding height	L×mm	500×1300
	Outlet diameter	mm	Φ150
Power system	Diesel engine model		Wefang Delier 6105ZB
	Electrical engineering power	kW	66
	Rotate speed	r/min	2100
Hydraulic system	Circuit type		Wechai Deutz
	Pumping system pressure	Mpa	31.5
	Mixing system pressure	Mpa	6-8
	Capacity of oil tank	L	370
	Max. Theoretical Vertical/ Horizontal Conveying Distance	m	160/600
Other parameters	Max. aggregate diameter	mm	Slick/scree: 50/40
	Inside diameter of delivering pipe	mm	Φ125
	Dimensions: length*width*height	mm	5000×2100×2260
	Total weight	kg	4000



Items		Units	Parameters
			HBTS60-13-90
Whole performance of machine	Max. theo. concrete output (L./H.)	m3/h	82/48
	Max.concrete pumping pressure (H. /L.)	Mpa	13/7
	Distribution valve type		S Valve
	Concrete cylinder diameter*stroke	mm	Φ200×1650
	Hopper capacity*feeding height	L×mm	600×1400
	Outlet diameter	mm	Φ180
Power system	Diesel engine model		Y2-280M-4
	Electrical engineering power	kW	90
	Rotate speed	r/min	1480
Hydraulic system	Circuit type		Open circuit
	Pumping system pressure	Mpa	32
	Mixing system pressure	Mpa	6-8
	Capacity of oil tank	L	560
Max. Theoretical Vertical/ Horizontal Conveying Distance		m	200/800
Other parameters	Max. aggregate diameter	mm	Slick/scree: 50/40
	Inside diameter of delivering pipe	mm	Φ125
	Dimensions: length*width*height	mm	5900×2000×2260
	Total weight	kg	6300

HBTS80



Items		Units	Parameters
			HBTS80-13-129R
Whole performance of machine	Max. theo. concrete output (L./H.)	m3/h	84/45
	Max.concrete pumping pressure (H. /L.)	Mpa	13/7.6
	Distribution valve type		S Valve
	Concrete cylinder diameter*stroke	mm	Φ200×1650
	Hopper capacity*feeding height	Lxmm	800×1400
	Outlet diameter	mm	Φ180
Power system	Diesel engine model		Wechai Duetz
	Electrical engineering power	kW	129
	Rotate speed	r/min	2200
Hydraulic system	Circuit type		Open circuit
	Pumping system pressure	Mpa	32
	Mixing system pressure	Mpa	6-8
	Capacity of oil tank	L	580
Max. Theoretical Vertical/ Horizontal Conveying Distance		m	200/800
Other parameters	Max. aggregate diameter	mm	Slick/scree: 50/40
	Inside diameter of delivering pipe	mm	Φ125
	Dimensions: length*width*height	mm	6000×2160×2600
	Total weight	kg	6300



Items		Units	Parameters
			HBTS80-13-90
Whole performance of machine	Max. theo. concrete output (L./H.)	m3/h	82/48
	Max.concrete pumping pressure (H. /L.)	Mpa	13/7
	Distribution valve type		S Valve
	Concrete cylinder diameter*stroke	mm	Φ200×1650
	Hopper capacity*feeding height	Lxmm	800×1400
	Outlet diameter	mm	Φ180
Power system	Diesel engine model		Y2-280M-4
	Electrical engineering power	kW	90
	Rotate speed	r/min	1480
Hydraulic system	Circuit type		Open circuit
	Pumping system pressure	Mpa	32
	Mixing system pressure	Mpa	14
	Capacity of oil tank	L	560
Max. Theoretical Vertical/ Horizontal Conveying Distance		m	200/800
Other parameters	Max. aggregate diameter	mm	Slick/scree: 50/40
	Inside diameter of delivering pipe	mm	Φ125
	Dimensions: length*width*height	mm	5900×2000×2260
	Total weight	kg	6300



◀ JBS

The JBS series concrete mixer pump combine the traditional concrete pump and the mixer together, has the following advantages.

The outlet hole is specially designed as the coarse type, which is wear-resisting and can prolong its service life, the arch broken structure is equipped on the machine which can avoid the concrete plug, insuring the smooth working of the concrete mixer, the hydraulic pipe joints are products of American Eaton brand, insuring the safety and no leakage of hydraulic system.

The main electric elements are from Schneider, the reliability of the electric control system is highly improved.

The S valve of the concrete mixer with pump is cast into shape with austenitic manganese steel which has long service life.

The diesel concrete mixer pump made a change on power compared with electric type, Mixing and pumping into one, simple to operate, easy to move, flexible, and stable performance. The pump construction operation system used in all automated, all material mixing, high pressure pumping as one; Double cylinder hydraulic pumping system, hydraulic system greatly enhance the the stirring Concrete pump overall reliability ensure pump strive foolproof work under harsh conditions, and especial suitable for areas where there is short of power.



JBS30



Items	Units	Parameters
		JBS30-10-66R
Whole performance of machine	Max. theo. concrete output (L./H.)	m3/h 30
	Max.concrete pumping pressure (H. /L.)	Mpa 10
	Distribution valve type	S Valve
	Concrete cylinder diameter*stroke	mm $\Phi 140 \times 1000$
	Hopper capacity*feeding height	L 400
	Outlet diameter	mm $\Phi 100$
Power system	Diesel engine model	Weifang
	Electrical engineering power	kW 66
	Rotate speed	r/min 2300
Hydraulic system	Circuit type	Open circuit
	Pumping system pressure	Mpa 28
	Mixing system pressure	Mpa 6-8
	Capacity of oil tank	L 350
Max. Theoretical Vertical/ Horizontal Conveying Distance		m 120/600
Other parameters	Max. aggregate diameter	mm Scree: 20
	Inside diameter of delivering pipe	mm $\Phi 100-\Phi 80$
	Dimensions: length*width*height	mm 5500x2300x3150
	Total weight	kg 6000



Items	Units	JBS30-10-37
Pumping system	Theoretic output	m ³ /h 30
	Theoretic outlet pressure	Mpa 8
	Theoretic delivery height	m 130
	Theoretic delivery distance	m 320
	Distribution valve type	S pipe valve
	Concrete cylinder spec.(inner dia. x stroke)	mm $\Phi 180 \times 1000$
	Oil cylinder spec.(outer dia. x inner dia. x stroke)	mm $\Phi 100 \times \Phi 70 \times 1000$
	Outlet diameter	mm $\Phi 150$
	Delivery pipe inner diameter	mm $\Phi 125$
	Hopper volume	L 450
	Main motor power	Kw 37
	Vibrating motor power	Kw 0.04
	Hydraulic circuit type	open
	Oil tank volume	L 120
	Max. aggregate diameter	mm ≤ 30
	Outer dimension (L*W*H)	mm 4370x2100x2580
Mixing system	Weight	Kg 3300
	Mixing volume per time	m ³ /time 0.4
	Mixing volume per hour	m ³ /h 16
	Mixing motor power	Kw 3x2=6
	Lifting motor power	Kw 4.5
	Water pump power	Kw 0.55

JBS40



Items		Units	Parameters
			JBS40-10-82R
Whole performance of machine	Max. theo. concrete output	m3/h	40
	Max.concrete pumping pressure	Mpa	10
	Distribution valve type		S Valve
	Concrete cylinder diameterxstroke	mm	Φ180x1000
	Hopper capacity	L	400
	Outlet diameter	mm	Φ150
Power system	Diesel engine model		Weichai Deutz
	Electrical engineering power	kW	82
	Winding motor power	kw	5.5
	Water pump motor powe	kw	0.55
Hydraulic system	Circuit type		Open circuit
	Pumping system pressure	Mpa	31.5
	Mixing system pressure	Mpa	6
	Capacity of oil tank	L	350
Other parameters	Max. Theoretical Vertical/ Horizontal Conveying Distance	m	150/700
	Max. aggregate diameter	mm	Scree 40/50
	Inside diameter of delivering pipe	mm	Φ125
	Dimensions: length*width*height	mm	6000x2300x3150
	Total weight	kg	4500



Items		Units	Parameters
			JBS40-10-45
Whole performance of machine	Max. theo. concrete output	m3/h	40
	Max.concrete pumping pressure	Mpa	11
	Distribution valve type		S Valve
	Concrete cylinder diameterxstroke	mm	Φ180x1000
	Hopper capacity	L	400
	Outlet diameter	mm	Φ150
Power system	Winding motor power	kw	5.5
	Water pump motor power	kw	0.55
	Electrical engineering power	kw	45
Hydraulic system	Circuit type		Open circuit
	Pumping system pressure	Mpa	28
	Mixing system pressure	Mpa	6-8
	Capacity of oil tank	L	370
Other parameters	Max. Theoretical Vertical/ Horizontal Conveying Distance	m	120/500
	Max. aggregate diameter	mm	Scree 30/20
	Inside diameter of delivering pipe	mm	Φ125
	Dimensions: length*width*height	mm	4200x2300x3150
	Total weight	kg	4500

JBS200



Items		Units	Parameters
			JZB200-10R
Whole performance of machine	Max. theo. concrete output	m3/h	13
	Max.concrete pumping pressure	Mpa	10
	Distribution valve type		S Valve
	Concrete cylinder diameter×stroke	mm	Φ140×1000
	Hopper capacity	L	500
	Outlet diameter	mm	Φ100
Power system	Diesel engine model		CY1115(YANMAR)
	Electrical engineering power	kW	
	Mixing Power	kw	3
	Rotated Speed		1800
	Output volume	L	0.2
Hydraulic system	Circuit type		Open circuit
	Pumping system pressure	Mpa	28
	Mixing system pressure	Mpa	6-8
	Capacity of oil tank	L	350
Other parameters	Max. Theoretical Vertical/ Horizontal Conveying Distance	m	100/400
	Max. aggregate diameter	mm	Scree: 20
	Inside diameter of delivering pipe	mm	Φ80-100
	Dimensions: length*width*height	mm	4100x2200x2250
	Total weight	kg	3800



Items		Units	Parameters
			JZB200-10
Whole performance of machine	Max. theo. concrete output	m3/h	10
	Max.concrete pumping pressure	Mpa	10
	Distribution valve type		S Valve
	Concrete cylinder diameter×stroke	mm	Φ140×1000
	Hopper capacity	L	400
	Outlet diameter	mm	Φ100
Power system	Main Power	kw	18.5
	Mixing Power	kw	3
Capacity	Feeding Capacity	L	0.25
	Discharge	L	0.2
Hydraulic system	Pumping system pressure	Mpa	28
	Mixing system pressure	Mpa	6-8
	Capacity of oil tank	L	370
Max. Theoretical Vertical/ Horizontal Conveying Distance		m	100/300
Other parameters	Max. aggregate diameter	mm	Scree: 20
	Inside diameter of delivering pipe	mm	Φ80
	Dimensions: length*width*height	mm	4200x2300x3150
	Total weight	kg	3200



Concrete Pump With Double Shaft Mixer ▶



Forced concrete mixing pump is a new type of equipment with js series mixer machine, compared with the traditional mixing pump has a certain advantage, stirring speed and quality is much higher than the general mixing pump.

Advantage and Features:

- 1.Wider scope of application: the use of forced mixing pump can make concrete mixing higher quality, more uniform, can be used for some of the higher requirements of the project, such as: small commodity building, municipal engineering.
- 2.More efficient work: forced mixing pump faster mixing, mixing more, faster and more material, can effectively improve the construction efficiency.
- 3.More stable performance: forced mixing pump running smoothly, reliable transmission, lower failure rate, longer life.



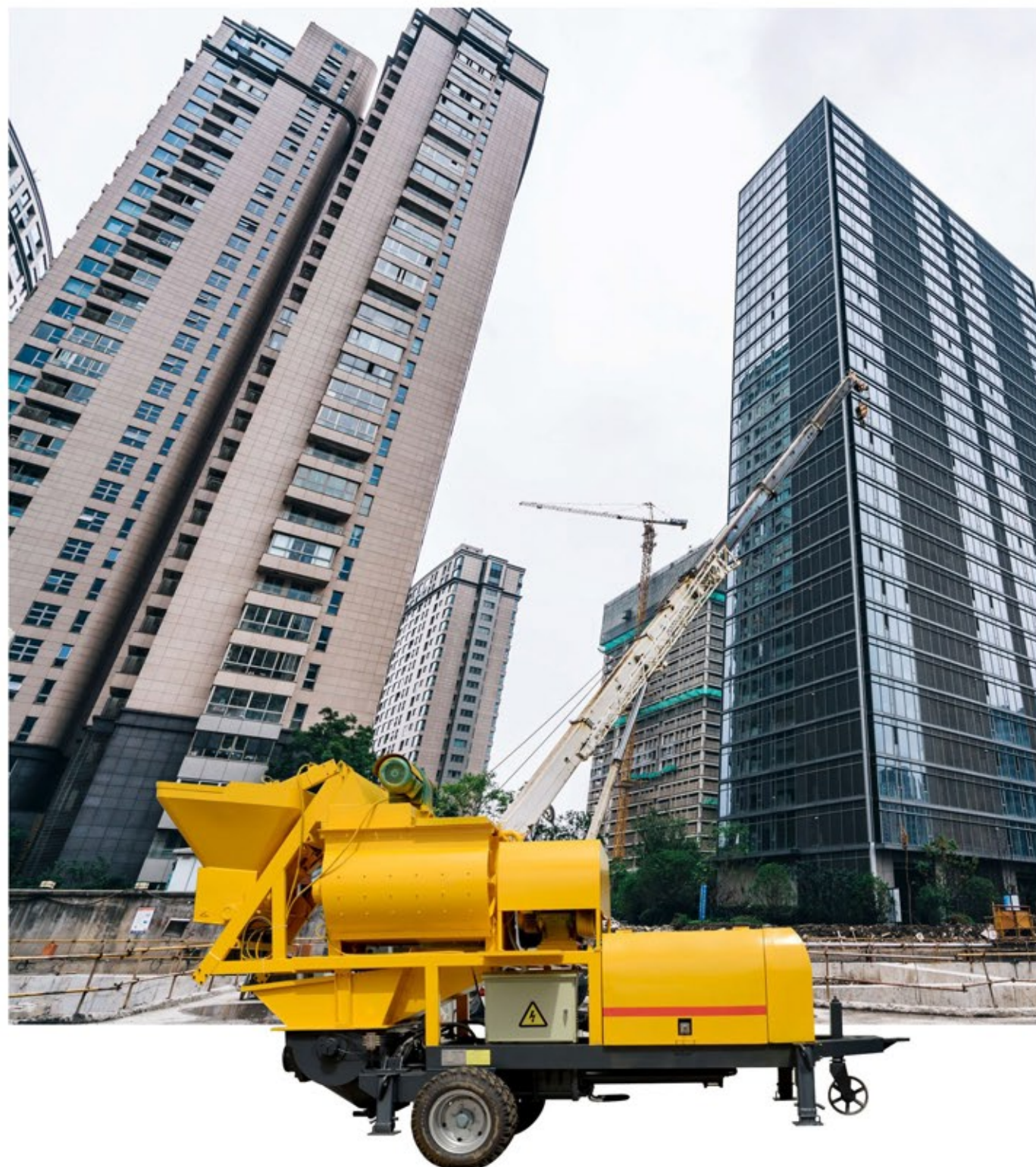


JBS40B-JS500

Items	Units	Parameters
		JBS40B-JS500
Whole performance of machine	Max. theo. concrete output	m3/h 40
	Max.concrete pumping pressure	Mpa 8
	Distribution valve type	S Valve
	Concrete cylinder diameterxstroke	mm Φ200×1000
	Hopper capacity	L 600
Power system	Outlet diameter	mm Φ180
	Winding motor power	kw 5.5
	Stir the motorPower	kw 5.516.2+13.2
	Water pump motor powe	kw 0.75
Hydraulic system	Circuit type	Open circuit
	Pumping system pressure	Mpa 28
	Mixing system pressure	Mpa 6-8
	Capacity of oil tank	L 370
Other parameters	Max. Theoretical Vertical/ Horizontal Conveying Distance	m 120/500
	Max. aggregate diameter	mm Scree: 40 50
	Inside diameter of delivering pipe	mm Φ125
	Dimensions: length*width*height	mm 5100x2250x3100
	Total weight	kg 4500

JBS40B-JS500-129R

Items	Units	Parameters
		JBS40B-JS500-129R
Whole performance of machine	Max. theo. concrete output	m3/h 40
	Mixing Capacity	m3 25
	Mixer Discharge Capacity	m3 0.5
	Max.concrete pumping pressure	Mpa 8
	Distribution valve type	S Valve
	Concrete cylinder diameterxstroke	mm Φ200×1000
	Hopper capacity	L 600
Power system	Outlet diameter	mm Φ180
	Diesel engine model	Wechai Deutz
	Electrical engineering power	kw 129
	Pumping system pressure	Mpa 31.5
Hydraulic system	Mixing system pressure	Mpa 6-8
	Capacity of oil tank	L 350
Other parameters	Max. Theoretical Vertical/ Horizontal Conveying Distance	m 150/600
	Max. aggregate diameter	mm Scree: 40 50
	Max.Aggregate	mm 60mm-80mm
	Inside diameter of delivering pipe	mm Φ125
	Dimensions: length*width*height	mm 7500x2300x3150
	Total weight	kg 5000



JBS40B-JS750

Items	Units	Parameters
		JBS40B-JS750
Whole performance of machine	Max. theo. concrete output	m ³ /h 40
	Max.concrete pumping pressure	Mpa 8
	Concrete cylinder diameter×stroke	mm Φ200×1000
	Hopper capacity	L 600
	Outlet diameter	mm Φ180
Power system Hydraulic system	Winding motor power	kw 7.5
	Mixer Power	kw 30
	Water pump motor power	kw 1.1
	Circuit type	Open circuit
	Pumping system pressure	Mpa 28
	Mixing system pressure	Mpa 6-8
	Capacity of oil tank	L 370
Max. Theoretical Vertical/ Horizontal Conveying Distance		m 120/500
Other parameters	Max. aggregate diameter	mm Scree: 40 50
	Inside diameter of delivering pipe	mm Φ125
	Dimensions: length*width*height	mm 6000x2300x3150
	Total weight	kg 9000

JBS40B-JS750-129R

Items	Units	Parameters
		JBS40B-8-129R
Whole performance of machine	Max. theo. concrete output	m ³ /h 40
	Max.concrete pumping pressure	Mpa 8
	Concrete cylinder diameter×stroke	mm Φ200×1000
	Hopper capacity	L 600
	Outlet diameter	mm Φ180
Power system	Diesel engine model	Wechai Deutz
	Electrical engineering power	kw 129
	Rotate speed	r/min 2200
Hydraulic system	Circuit type	Open circuit
	Pumping system pressure	Mpa 31.5
	Mixing system pressure	Mpa 6-8
	Capacity of oil tank	L 350
Max. Theoretical Vertical/ Horizontal Conveying Distance		m 150/600
Other parameters	Max. aggregate diameter	mm Scree: 40 50
	Max.Aggregate	mm 60mm-80mm
	Inside diameter of delivering pipe	mm Φ125
	Dimensions: length*width*height	mm 6000x2300x3150
	Total weight	kg 5000

■ BS25



Items		Units	Parameters
			BS25-08-56R
Whole performance of machine	Max. theo. concrete output (L./H.)	m3/h	25
	Max.concrete pumping pressure (H. /L.)	Mpa	8
	Distribution valve type		S Valve
	Concrete cylinder diameterxstroke	mm	Φ140×845
	Hopper capacityxfeeding height	M3/mm	0.4/1100
	Outlet diameter	mm	Φ100
Power system	Diesel engine model		Weifang Deller 4100
	Electrical engineering power	kW	56
	Rotate speed	r/min	2000
Hydraulic system	Circuit type		Open circuit
	Pumping system pressure	Mpa	18
	Mixing system pressure	Mpa	6-8
	Capacity of oil tank	L	260
Max. Theoretical Vertical/ Horizontal Conveying Distance		m	120/300
Other parameters	Max. aggregate diameter	mm	10/20
	Inside diameter of delivering pipe	mm	Φ80
	Dimensions: length*width*height	mm	4500×1750×1600
	Total weight	kg	3000



Items		Units	Parameters
			BS25-10-37
Whole performance of machine	Max. theo. concrete output (L./H.)	m3/h	25
	Max.concrete pumping pressure (H. /L.)	Mpa	10
	Distribution valve type		S Valve
	Concrete cylinder diameterxstroke	mm	Φ140×845
	Hopper capacityxfeeding height	Lxmm	400×1100
	Outlet diameter	mm	Φ100
Power system	Diesel engine model		Y225M-3
	Electrical engineering power	kW	37
	Rotate speed	r/min	1480
Hydraulic system	Circuit type		Open circuit
	Pumping system pressure	Mpa	18
	Mixing system pressure	Mpa	6-8
	Capacity of oil tank	L	260
Max. Theoretical Vertical/ Horizontal Conveying Distance		m	100/400
Other parameters	Max. aggregate diameter	mm	Slick /scre: 20/10
	Inside diameter of delivering pipe	mm	Φ80
	Dimensions: length*width*height	mm	3400×1420×1600
	Total weight	kg	2300



JBS ▶

Planetary mixing type concrete pump and mixer is a type of fully automated construction operating system machine, which set feeding, mixing and high pressure pump as one of the concrete mixer pump. About mixing pump, easy operation , stable performance, easy to move.

Compared with tradition concrete mixer pump,concrete pump with planetary mixer machine has higher productivity. The planetary concrete mixer machine adopt vertical shaft,the material can be mixed more evenly in short time.





LHB40R

Items	Units	Parameters
		LHB40R
Whole performance of machine	Max. theo. concrete output	m ³ /h 40
	Mixer Capacity Per Hour	M ³ 22.5
	Mixer Feeding Capacity	L 1200
	Mixer Discharging Capacity	L 750
	Max.concrete pumping pressure	Mpa 9
	Concrete cylinder diameterxstroke	mm Φ180×1000
	Hopper capacity	L 600
	Outlet diameter	mm Φ150
Power system	Diesel engine model	Wechai Deutz
	Electrical engineering power	kW 82
	Pumping system pressure	Mpa 31.5
	Mixing system pressure	Mpa 6
	Capacity of oil tank	L 350
Largest pumping Distance(Horizontal/Height)		m 100/400
Other parameters	Max. aggregate diameter	mm Scree: 40 50
	Inside diameter of delivering pipe	mm Φ125
	Dimensions: length*width*height	mm 3800x2200x2100
	Total weight	kg 5600

LJBS40-10-45

Items	Units	Parameters
		LJBS40-10-45
Whole performance of machine	Max. theo. concrete output	m ³ /h 40
	Mixer Capacity Per Hour	M ³ 22.5
	Mixer Feeding Capacity	L 1200
	Mixer Discharge Capacity	L 750
	Max.concrete pumping pressure	Mpa 10
	Concrete cylinder diameterxstroke	mm Φ180×1000
	Hopper capacity	L 550
	Outlet diameter	mm Φ150
	Electrical engineering power	kW 45
	Pumping system pressure	Mpa 28
	Mixing system pressure	Mpa 6-8
	Capacity of oil tank	L 370
Largest pumping distance(Horizontal/Height)		m 120/400
Other parameters	Max. aggregate diameter	mm Scree: 40 50
	Inside diameter of delivering pipe	mm Φ125
	Dimensions: length*width*height	mm 3800x2200x2100
	Total weight	kg 4800







Delivery

